

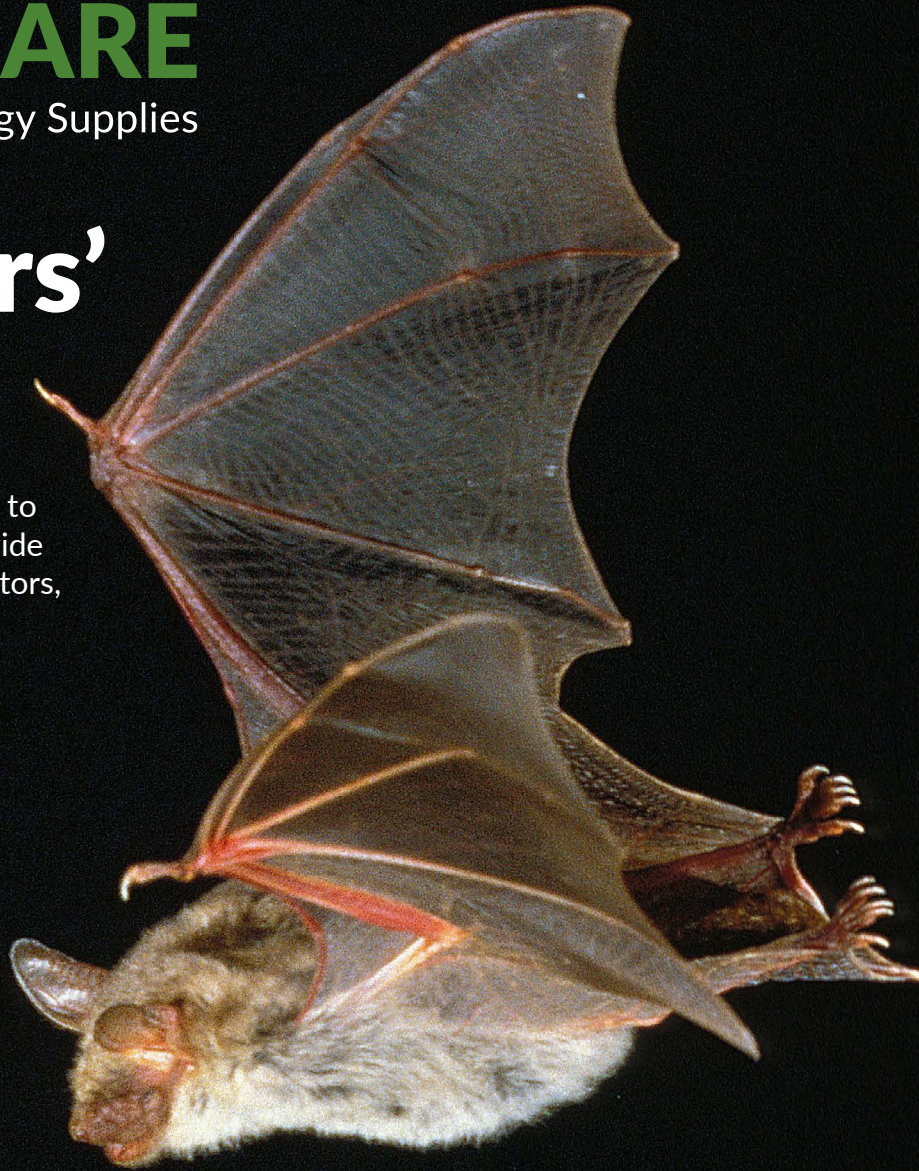


# WILDCARE

Nationwide Ecology Supplies

## Bat Workers' Equipment

We supply all the equipment you need to monitor and protect bats including a wide range of static and handheld bat detectors, analysis software, plus bat worker accessories and more.



Prices subject to change. See website for up to date pricing.





### Song Meter SM4BAT-FS with SMM-U2

Our most popular Full Spectrum static detector, the lightweight, compact, SM4BAT-FS can be left in the field for over a month at a time using just one set of D cell batteries. Enclosed in a rugged polycarbonate casing, with integrated mounting bracket and weatherproof security cover, the unit stays dry whatever the weather.

The SM4BAT-FS comes pre-programmed with schedules designed for bat survey work, but you can easily create customised schedules. There is a single microphone channel recording 16-bit .wav files at sample rates up to 500 kHz. Files are saved onto 2 SD cards giving more than 1 terabyte total capacity using two 512 GB SDXC cards.

Requires an SMM-U1 or SMM-U2 microphone. 3 year warranty.

11224-FS	Unit only	£807.00
11225-FS	With SMM-U1	£1,014.00
13890-FS	With SMM-U2	£950.00
13891-FS	With SMM-U2 and accessories	£1,044.00



### Song Meter Mini Bat

The Song Meter Mini Bat is the smallest, lightest and most affordable static audio recorder on the market. It offers a compact (12.3 x 16.8 x 3.6 cm) and lightweight (290 g) solution for your recordings without compromising on the quality and autonomy. The Mini Song Meter can record up to 30 ten-hour nights with 4 AA batteries or 150 ten-hour a night with optional standard lithium-ion batteries, and it is supplied with the latest generation built-in microphone offering the same quality as the SM4 microphones. The status and the settings of the recorder can be accessed through an app via bluetooth.

The Song Meter Mini Bat Bundle includes: Song Meter Mini Bat, Kingston SDHC Card 32GB Class 10, Ansmann AA 2650mAh Rechargeable Batteries 4pk and Masterlock Python™ Cable 8417D.

13892	Unit only	£616.00
13892-B	Bundle	£640.00



### Lithium-ion Lid

The Wildlife Acoustics Lithium-Ion Lid is compatible with the Song Meter Mini and Song Meter Mini Bat recorders. This optional lid can accommodate up to six rechargeable 18650 Li-ion batteries (not included), to extend deployment time up to 1,100 hours.

13865	£136.00
-------	---------



### XTAR 18650 3.6V/3.7V 3500mAh Button-top Rechargeable Battery

High-capacity speciality Li-ion battery, with a low discharge rate.

13212	£15.13
-------	--------



### XTAR MC6C USB Battery Charger for Li-ion Batteries

Self-adjusting output enables continued functioning, even with low power input. Robust design with flame-retardant and fire-resistant ABS casing

13211	£30.40
-------	--------



### SMM-U2 Microphone & 5m Cable

A highly sensitive, low-noise microphone, the SMM-U2 is the latest mic from Wildlife Acoustics. Innovative weatherproof design includes a built-in mounting bracket for a wide range of mounting options. Comes with a 5 m cable. Compatible with the SM3BAT and SM4BAT.

13886	£175.39
-------	---------



### SMM-U1 Microphone

A sensitive, low noise ultrasonic microphone, recording up to 190 kHz. Differential output significantly reduces noise from electromagnetic sources. Compatible with the SM4BAT and SM3BAT. Available with 3 m cable or on its own.

12887	3m cable	£283.00
13887	Without	£227.00



### SM3 & SM4 Mic Extension Cables

Allows the microphone to be situated away from the recorder. Available in 3, 5, 10 or 50 m lengths; other lengths available on request. Longer cables can be daisy chained up to 100 m. Compatible with the SM4BAT and SM3BAT.

11212-3	3m	£53.07
11212-5	5m	£54.00
11212-10	10m	£80.81
11212-50	50m	£128.00
11212-100	100m	£181.32



### ABUS 65/30 Padlock

Solid brass body padlock with nano protect chrome plated shackle supplied with a set of keys.

22120062	£10.31
----------	--------



### Masterlock Python Security Cable & Lock

Fully adjustable cable lock. Always the right length for any application up to 1.8 m, and can be locked at any length to fit tighter. The cable is covered in an alloy body with black bumper to resist scratching. Supplied with 4 keys.

12757	1800 x 10	£34.50
11205-B	1800 x 8	£17.48



### GPS for Song Meter Units

A valuable time-saving tool to keep track of the locations of your Song Meter units. Accurately sets the clock to within one second of the GPS time base. Provides a quick way to set the latitude and longitude. Two devices available, compatible with either SM4BAT or SM3BAT.

12829	£145.00
-------	---------



**Wildcare Li-ion Battery Pack**

Extends battery life of Song Meter recorders. Includes voltage regulator, low-voltage shut-off, connector and indicator light when operational. Housed in a tough waterproof storm case. 7.8 kg. Available in 90 Ah.

13292-SM34	£434.00
13292-SM2	£413.00



**SM3 & SM4 External Power Cable**

Power cable for connecting an external battery to a Song Meter unit. Compatible with SM3BAT and SM4BAT units. Option of spade or crocodile connections

12845	Spade	£73.80
12845-C	Croc	£94.60



**Mic "Calibrator" Tester**

An indispensable tool to check the performance of SMX-U1 and SMM-U1 microphones and to ensure you are using appropriate settings.

12885	£217.00
-------	---------



**Surge Protector for SM4BAT-FS Bat Recorders**

Protects equipment from power surges that could travel down the microphone cable and damage the recorder. This accessory should be used wherever microphones are mounted at elevation.

11332	£270.00
-------	---------



**Grounding Bracket for SMM-U2**

The Grounding Bracket protects the microphone from electrical surges that could damage it and the SM4BAT recorder.

11333	£43.90
-------	--------



**RS-232 Status and Activity Monitoring Interface Cable for SM3/4BAT**

Designed for wind farm operators who need to know the immediate status of their Song Meters, this cable connects SM4BAT-FS recorders to data loggers such as the Ammonit Meteo-40.

11330	SM4BAT	110.52
11331	SM3BAT	113.00

**The SM4BAT-FS now has a remote logging capability, designed for wind farm operators who need to know the status of their Song Meters.**

The new upgrade implements a serial communications interface to wind energy SCADA systems. The SM4BAT-FS responds to serial requests with information including: cumulative number of bat passes and pulses detected, timestamp, voltage, flash card capacity.

The recorder is configured and operates just as it normally would when recording bats in triggered WAV mode. However, once the SD cards are full or fail, the SM4BAT-FS will continue monitoring and counting will continue to respond to requests over RS-

232 with bat activity information.

The protocol is "plug-and-play" in the sense that the SM4BAT-FS automatically detects receiving the first request at either 38,400 or 19,200 baud while recording bats. Once detected, the SM4BAT-FS will configure the serial port and respond to subsequent requests with information.

As in normal operation, the user can change the various parameters and settings to schedule monitoring times and to define a valid bat pulse or pass.





### Elekon Batlogger C

Full-spectrum recorder with built-in GSM module. Users receive email and/or SMS messages, with a daily status report, notification of low battery or nearly full SD card, and an alarm message if the unit is moved.

Waterproof and dustproof, and integrated into a carry case. Comes with one Li-ion battery for up to 50 hours of recording, extendable with a second battery. Can also operate directly from a 230 V power supply. Comes with: 1 SD-Card 16 GB, FG Black Microphone with 2 m cable, li-ion battery, power supply. Free software. 2 year warranty.

11221	£1,627.00
-------	-----------



### Solar Panel for Batlogger C

High quality 20W monocrystalline solar module designed to power the BATLOGGER C.

11195	£240.00
-------	---------



### Elekon Batlogger A/A+

Weighing just 695 g (A+ with mic and batteries), the ultra-compact Batloggers A and A+ record in full spectrum onto an SD card. The Batlogger A+ records up to 70 hours using a rechargeable Li-ion battery pack (included). The Batlogger A uses AA batteries and records for 30 hours. Inconspicuous and waterproof. Comes with FG Black microphone with 2 m cable; 16Gb Micro SD-Card 16 GB; and one 7.2 V li-ion battery pack with charger. 2 year warranty.

11220	A	£850.00
11219	A+	£987.00



### Elekon MC32W Microphone Cable for Wind Turbine

The MC32W is a 5m cable designed for use with a BATLOGGER C in a wind turbine. It allows a microphone and GSM-Antenna to be mounted on the outside of a turbine gondola and includes an integrated testing function.

11190	£211.00
-------	---------



### Microphone Tester Pulse

The Microphone Tester Pulse can be used to test microphones of BATSCANNER and BATLOGGER devices. Ideal for a quick check ahead of your bat survey. 60 x 40 x 19 mm. 25 g. Range: 20-100 kHz

12918	£97.70
-------	--------



### Waterproof Cable

Waterproof cable and microphone housing for BATLOGGERS A/A+ and C. Microphone not included.

11312	£87.50
-------	--------



### Security Set for Batlogger A+

Stainless steel security set prevents tampering and theft, and provides useful mounting points. Padlock included.

10415	£104.00
-------	---------

### Elekon Batlogger M

The Batlogger M is a compact and versatile bat detector with a host of sophisticated features. Built-in GPS makes it suitable for transect and emergence surveys.

The Batlogger M records in 16-bit Full Spectrum onto an SD card. Recordings are tagged with location, temperature, time and date. Recording schedules and triggers are fully configurable. Audio output is auto-tuning heterodyne, allowing the user to monitor calls in real time. The unit is powered by internal, rechargeable batteries giving several nights worth of recording.

Elekon's auto-ID analysis software (European species only) is available to download free of charge for Windows (BatExplorer) or Mac (BatScope).

Comes with: SD Card, Battery Charger, Carry Case and Sennheiser Headphones. 2 year warranty.



12675

£1,317



### Batlogger Mic Extension Cables, 2m

2 m Microphone extension cable for Batlogger units. Available as a standard or waterproof versions. Waterproof version includes an integrated tripod socket for more versatile mounting options.

12896 Standard £34.90

12897 Waterproof £86.00

### Elekon Strongbox

The Strongbox S is a combined external battery and protective case for BATLOGGER M units giving up to 120 hours recording time. With 3 Li-ion batteries included, the Strongbox S allows long-term surveillance and monitoring of bat habitats and protects your BATLOGGER M from the weather.

11197

£624.00



### FG Black Microphone

Omni-directional FG Black mic for Batlogger M, A/ A+ and C units. Integrated preamplifier. Weather resistant, gold plated 3.5 mm connector. Records at 10 - 130 kHz.

12898

£137.00



### Batlogger S2 c/w 32GB MicroSD Card, Battery, Microphone and USB-C to USB-C Cable

Small and simple bat detector

The BATLOGGER S2 is easy to use and provides all the features you need in a bat detector. Setting the device up is easier than ever before, thanks to the BATLOGGER Control App. The S2 is the affordable and simple bat detector that you always wanted.

11099

£556.00



### Anabat Swift

The Anabat Swift records in both Full Spectrum and Zero Crossing formats and boasts a 500 ks/s sample rate. Lightweight and compact, the Swift has a built-in GPS and a transect mode to record a location every second, making it possible to carry out both transect and static surveys with the same unit. Frequency division headphone output.

Changing settings on the Swift is quick and intuitive through the built-in touch screen. Units are pre-programmed for Continuous or Night-time recording and come with omni-directional mic and 1.5 m extension cable. Two SD Card Slots. Uses either 4 or 8 AA batteries (depending on survey requirements), or an external power supply.

Comes with: Carry case, 1.5 m Microphone Extension Cable, USB Cable, 4 and 8 xAA Battery holders. Batteries, SD Cards and microphones must be purchased separately. 2 year warranty.

11327	Unit Only	£902.87
11316	Unit with Microphone	£1032.58



### Anabat Express

The Anabat Express has been designed to make life easier. It is easy-to-use and quick to deploy. The GPS Transect Mode allows you to track the detector's path, with each bat call being automatically tagged with a GPS location. The integrated GPS recorder automatically updates sunset and sunrise times as well as recording the unit's location. In addition, the Express can use an omnidirectional or directional microphone, which can be plugged directly into the front of the case, or to a 1.5m extension cable.

12971	Unit Only	£607.80
-------	-----------	---------

### Anabat Roost Logger

A low cost, weatherproof bat activity recorder, optimised for very long-term monitoring without an external power source. Lasts up to 6 months, with a 50% duty cycle or 6 weeks continuously recording. Narrow bandwidth mic (peak sensitivity 42 kHz) reduces noise from echoes while still picking up signs of activity. Contained within a weatherproof and washable case, the Roost Logger is also ideal for White-Nose Syndrome detection (through abnormal diurnal activity) and can be fully decontaminated.

11214	£415.11
-------	---------



### Directional Microphone

Directional microphone for SD2 and express.

11203	£140.00
-------	---------



### Anabat Express Microphone

Omni-directional microphone for the Anabat Express and Swift.

11325	£142.70
-------	---------



### Camo Strap

Stretchy band in camo colouring to assist with mounting your Anabat Swift.

11206	£13.03
-------	--------





**Anabat Security Box & Cable Lock**

Rugged security box and cable lock for Anabat Swift and Anabat Express. Weather resistant, green powder coated steel exterior. Lid slides into the case for easy access and further security. Attachment points for both a cable lock and/or additional padlock.

11204	£71.90
-------	--------



**Anabat Microphone Extension Cables**

Microphone extension cables, compatible with the Anabat Express and Swift bat recorders. Available in 5 m, 10 m and 20 m lengths.

12731	5m	£38.00
11321	10m	£70.60
12733	20m	£92.30



**Fused External Power Lead**

Fused 1.5 m power lead to connect an Anabat Swift to an external power source. Waterproof connector and fuse holder, and standard 6.35 mm spade terminal power source connectors. 6 or 12 V input. Readily available blade fuse (1 A).

11194	£19.54
-------	--------



**Titley Chorus inc Acoustic Mic**

The Chorus: designed for tough environments - configure and deploy without the need for additional devices. This is an easy-to-use acoustic detector which is compact, lightweight and customisable, then the Chorus is your solution to recording bats, birds, frogs and other vocalising wildlife. In addition to having an acoustic microphone the unit is dual-channel so that you can attach a second microphone for stereo recordings, or an ultrasonic microphone, giving you the option to record bats at night and birds during the day.

10015	£402.00
-------	---------



**Titley Chorus Security Box**

10019	£55.00
-------	--------



**Titley Chorus Gooseneck**

10018	£45.00
-------	--------



**Titley Chorus Acoustic Mic**

10017	£204.00
-------	---------



**Titley Chorus Ultrasonic Mic**

10016	£204.00
-------	---------





**Elekon WE X1 Package Includes:**



Microphone and sensor.

5m cable with mounting bracket for gondola mounting.

**Elekon WE X2 Package Includes:**



Microphone and sensor x2.

5m cable with mounting bracket for gondola mounting.

5m cable with mounting bracket without LTE extension.



**Elekon We X**

Especially designed for long-term, autonomous use on wind farms, the BATLOGGER WE X lets you monitor bats, change settings or download the recordings, all remotely from your office! Remote access is provided through a subscription to BATLOGGER Connect and every unit comes with 2 months free Gold service.

Recording calls in full spectrum, the detector has either one (WE X 1), two (WE X 2) or four (WE X 4) microphones, depending

on the model. The microphone(s) come with a 5m cable and microphone tester/sensor, and one integrated mounting bracket for fixing to the gondola of a wind turbine. An air pressure monitor and humidity sensor provide additional information.

The BATLOGGER WE X is available as 1, 2 or 4 channel device. The devices have the same range of functions, but different numbers of microphones can be connected.

11199-1	Batlogger We X 1	£2,072.43
11199-2	Batlogger We X 2	£2,652.71

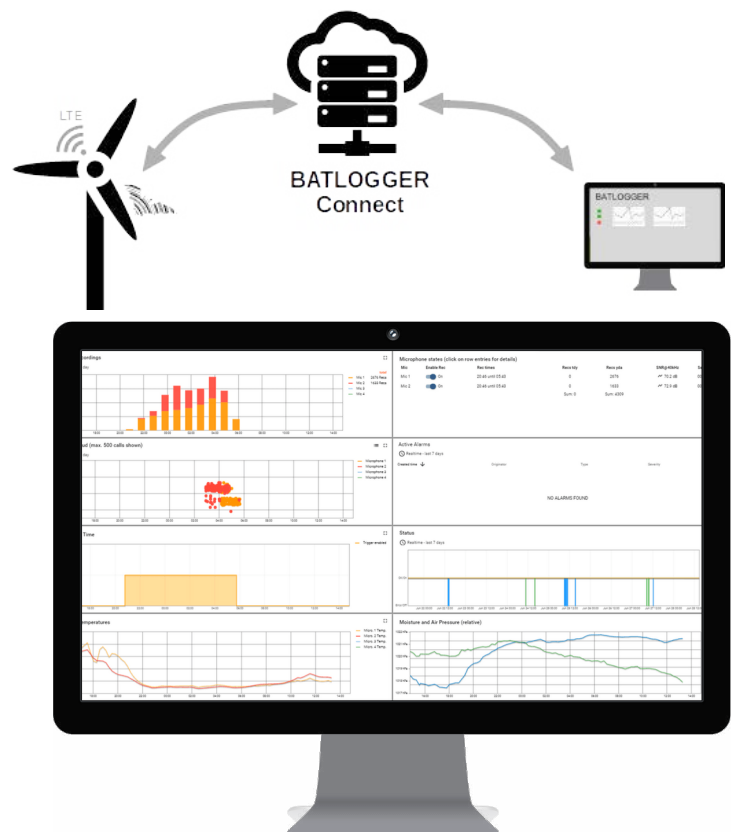
**Batlogger Connect**

The WE X comes with an integrated SIM card which allows for wireless broadband (LTE) connection to the internet. This function requires an annual subscription to BATLOGGER Connect.

With BATLOGGER Connect you are always connected to your BATLOGGER WE X. You can see your recordings, check your microphone, or change device settings from anywhere in the world. You always know if your devices are recording correctly and can simply download all bat recordings from home.

Three annual subscription packages are available and you will need to purchase one of these once your free subscription runs out (you will be able to do this from within BATLOGGER Connect):

Bronze	Settings and alarms enabled. No data transmission. No cloud storage.
Silver	Settings, Alarms, Statistics and access to recordings enabled. 1GB/month LTE data transfer. 2GB cloud storage
Gold	Settings, Alarms, Statistics and access to recordings enabled. 5GB/month LTE data transfer. 10GB cloud storage.





### Batmode 2S / 2S+

The BATmode 2S is a modular bat monitoring system specially designed for the use on wind turbines. It mainly consists of a central detector unit, one microphone including the associated UltraSoundGate analog-to-digital converter from Avisoft Bioacoustics as well as an antenna. Batmode 2S comes with 4G to access data. Batmode 2S+ comes with built in wifi, 4G LTE and temperature sensor.

11339	Batmode 2S	£4,131.00
11338	Batmode 2S+	£5,996.55



### Microphone Disc GM50

Electret Ultrasonic Microphone Disc with Test Signal Speaker for mounting in the nacelle floor of wind turbines or on a tripod.

11341	£633.90
-------	---------



### Tower Microphone TM10

The electret TM10 ultrasonic stick microphone was specially developed for the installation in the tower wall of large wind turbines for the qualitative detection of bat activity at the level of the lower rotor tips. By omitting a test signal speaker, the microphone has a very small diameter of only 12mm and the required mounting hole of 14mm is as small as possible.

11344	£645.00
-------	---------



### Installation BatBox S

The Batbox S is the optimal mounting device to install the BATmode 2S and BATmode 2S+ systems in a safe and protected manner within the nacelle of wind turbines.

11340	£399.00
-------	---------



### Microphone Disc GM90

The GM90 microphone disc was developed in cooperation with the BMU-funded research projects RENEBA I-III (WindBat). The disc features an ultrasonic microphone capsule Knowles FG -23629-P16, which fulfills all the requirements in terms of sensitivity, frequency response and directionality for a successful bat monitoring in wind turbines.

11343	£645.00
-------	---------



### Microphone Channel Extension Kit for Batmode

Microphone Channel Extension Kit for the BATmode system which consists of an UltraSoundGate 116Hnbm-r and one microphone of your choice.

- Avisoft UltraSoundGate 116Hnbm-r (without Avisoft RECORDER License)
- Selected microphone (GM50, GM90, TM10 or TM20)
- Connector kit for microphone (2m)
- USB connector for UltraSoundGate

11347	£1,543.00
-------	-----------





### Elekon Batlogger M2

Compact, ergonomic, handheld recorder for active monitoring. Comes with SiSonic Microphone.

Key features:

- Record and display ultrasonic bat calls
- Easily changeable microphone
- Internal Lithium battery with USB-C charging-Tripod mounting socket for easy roost surveying
- Built-in voice microphone so you can make notes as you go
- Full-spectrum and real-time heterodyne capability
- Automatically adjusts the peak frequency
- Preset recording modes and custom profile capabilities
- The internal battery lasts approximately 15 hours
- GPS data can be extracted for use with Google Maps/Earth

---

11097	£1006.00
-------	----------

---



### Elekon M2 Microphone Sisonic

The M2 microphone Sisonic has been designed so that you can replace it easily in the field. Its robust construction helps to protect it from being dropped. This microphone is constructed with a MEMS (Micro-Electro-Mechanical System) component which offers high signal-to-noise ratio, low power consumption, and good sensitivity.

---

11098	£104.00
-------	---------

---



### Elekon Batscanner Stereo

A great quality auto-tuning Heterodyne detector, with two microphones to give you stereo sound output. This allows you to hear which direction the bat is travelling in. Fits comfortably in the hand and displays the detected frequency on an LCD display. Headphone and speaker operation; crystal clear sound. Comes with Sennheiser headphones.

---

12893	£245.00
-------	---------

---

### *Do you need some advice?*

Our friendly team are on hand to offer advice  
Monday - Friday 8am-5pm.

Call **01451 833 181** or email [sales@wildcare.co.uk](mailto:sales@wildcare.co.uk)



### Elekon Batscanner Standard

The BATSCANNER is a great little device that you can carry around, turn on, and listen to. The ultrasonic sounds are automatically transformed into the audible range allowing you to hear calls in real-time. What makes the BATSCANNER unique is that the mixing frequency is determined and readjusted automatically by the call frequency of the bats.

---

12890	£198.00
-------	---------

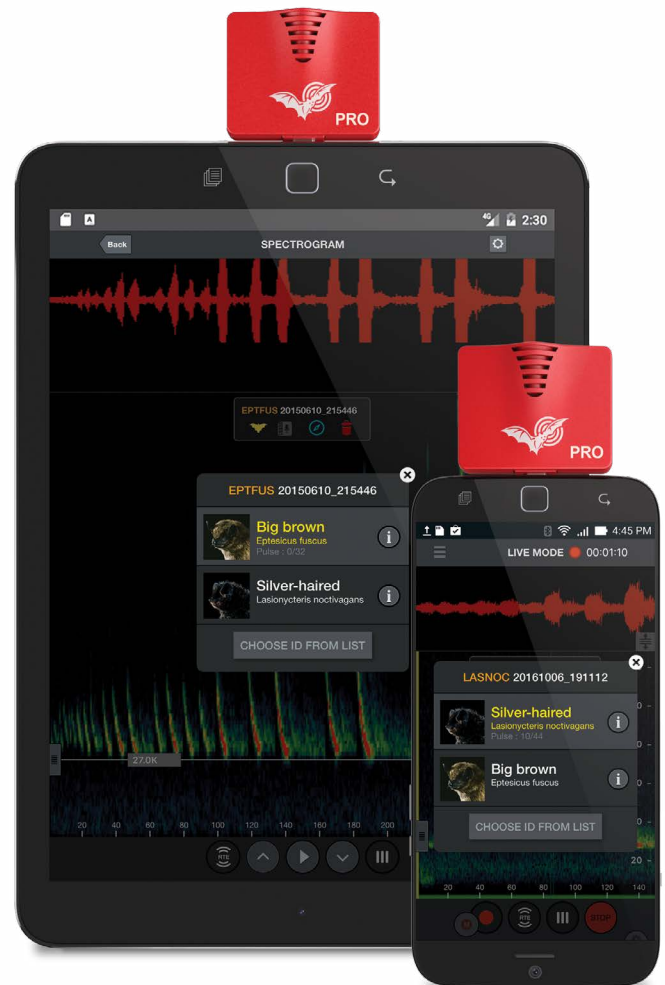
---

## Echo Meter Touch 2

Available in Standard and Pro versions for iOS and Android, the Echo Meter Touch 2 is our bestselling bat detector range. The Echo Meter Touch 2 system has three components: your mobile iOS or Android device (please see our web site for compatible models); the unit itself, which plugs into your device; and the Echo Meter Touch App, free to download from the Apple App Store or Google Play Store.

These units offer real-time auto-ID, beautifully clear spectrograms, map views and a range of selectable audio output options. Intuitive and easy to use, the Echo Meter Touch 2 range also provides the high quality recordings required for professional use. 16-Bit .wav files are saved on your device and are easily shared for collaboration or further study.

Pro versions have several additional features including adjustable trigger sensitivity, adjustable trigger window, three gain settings, and ON/OFF options for Auto-ID and Save Noise Files.



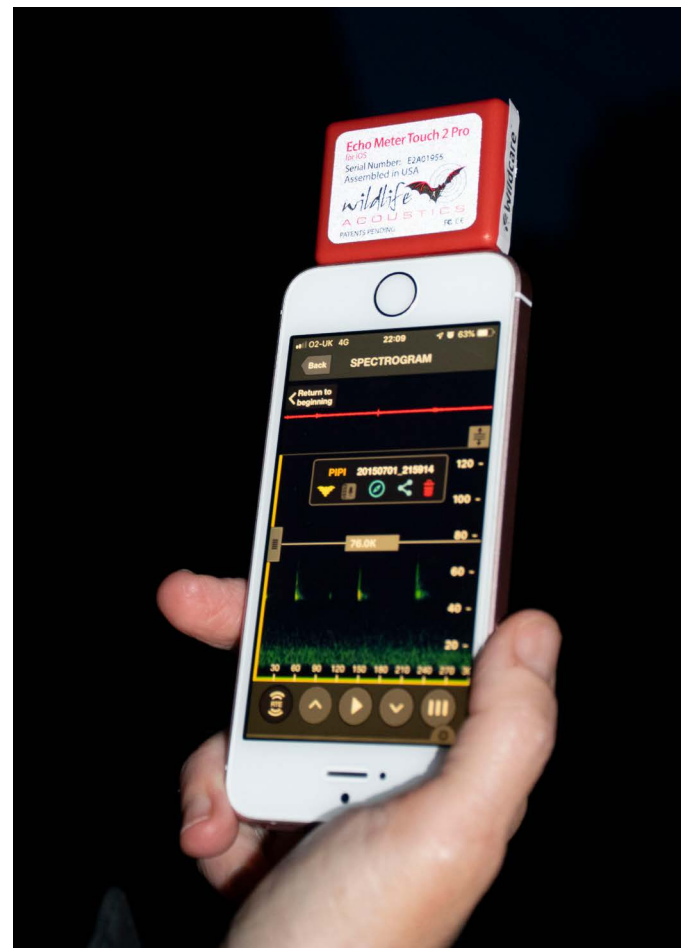
13888	EchoMeter Standard - iOS	£201.00
13889	EchoMeter Pro - iOS	£367.00
13898	EchoMeter Standard - Android	£176.00
13899	EchoMeter Pro - Android	£309.00



### Adaptor for Android

Type C to Micro USB adapter for Android devices.

11301	£3.81
-------	-------







### Anabat Walkabout

Packed with useful features, the Walkabout is a favourite for transect and emergence surveys. Based on an Android operating system, the unit saves Full Spectrum and Zero Crossing files onto an SD card.

A full-colour 5 inch LDC touchscreen makes it easy to monitor and review calls in the field. A built-in GPS and mapping system tags calls and log your path as you go. Maps can also be saved for offline viewing.

Comes with: Wall charger, USB Cable, 16 GB SD Card, earphones, hand strap, lanyard, directional cone attachment and microfibre cloth. 1 year warranty.

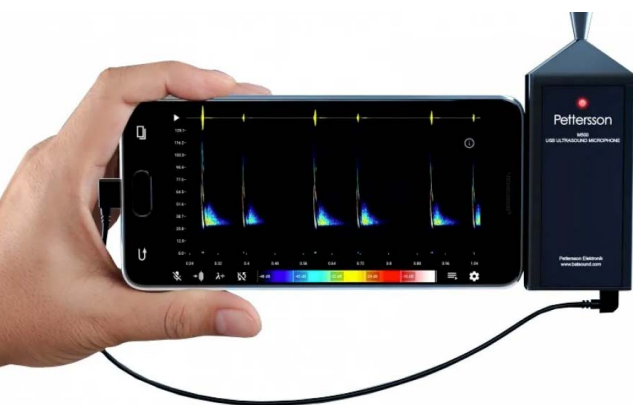
12773 £1,446.00



### Anabat Scout

A simple, robust, handheld unit with full spectrum recording onto an SD card, and a heterodyne output function via the speaker or headphones. Features a useful in/out counter for roost emergence surveys, and built-in GPS. Powered by two AA batteries.

11329 £734.00



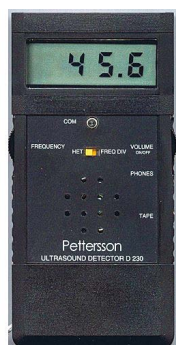
### Pettersson U-Series USB Ultrasonic Microphone

The Pettersson u-series microphones are your answer to a portable recording unit, offering excellent performance. All components are housed in a slim, durable aluminium enclosure, and have a USB Micro B connector which is designed to plug into your smartphone or tablet.

Key Features:

- Excellent Sensitivity
- Low noise
- Compact
- Low power consumption

12740	u256	£208.00
12741	u384	£290.58
12514	M500-384	£383.80



### Pettersson D230

Handheld detector with Frequency Division and Heterodyne output. Backlit digital display. Using stereo headphones, Heterodyne is heard on the left channel and Frequency Division on the right. Recordings can be made with an audio recorder such as the TASCAM.

12618 £407.00



### Pettersson D240X

Popular Heterodyne and Time Expansion detector, with a backlit digital display showing the tuned Heterodyne frequency. Frequency and volume controls are on the side of the case, making them easy to adjust. Record with a digital audio recorder for later analysis on a PC.

12617 £843.00

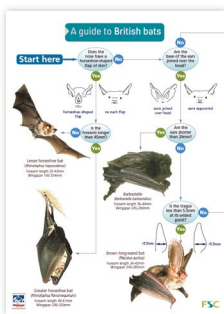


### BatBox Duet

The popular Batbox Duet is a dual mode detector with Heterodyne and Frequency Division outputs. In Heterodyne, specific frequencies can be tuned into, while at the same time the Frequency Division mode scans the entire spectrum from 17-120 kHz, and records all bat calls. These can be downloaded and analysed using Batscan software. Robust design, headphone and recording sockets, back-lit LED display. Comes with protective carry pouch.

12604

£231.00



### British Bat ID Chart

An invaluable field identification aid, especially when using a Heterodyne detector. This laminated FSC Chart gives Heterodyne call frequencies and patterns for each species, as well as typical behaviour patterns to look out for.

17063

£3.58



### Magenta Mk5

Great value Heterodyne detector with backlit LCD display. Tuneable from 10 to 130 kHz, allowing for some detection of insects and birds. One handed operation, headphone and recording sockets. Built in LED torch.

12601

£88.50



### Magenta Mk4

With a Magenta Bat Detector you can listen to ultrasonic chirps, smacks and clicks from bats. Special circuitry detects the human-inaudible sounds emitted by bats and processes them into a form that human hearing can discern.

12600

£59.10





### Stereo Connection Lead

High quality 3.5 mm jack to jack stereo lead for connecting TASCAM and other recorders to the Duet.

12652

£3.29



### Zoom

The H2n Handy Recorder is the only portable recording device to come with five built-in microphones and four different recording modes: X/Y, Mid-Side, 2-channel surround and 4-channel surround.

12793

£151.00

For every purchase made on our Bat Conservation Trust page we will donate 10% of the sale to BCT.

We are delighted to be working in partnership with the BCT to help protect British bats.

Bat Conservation Trust



### Bat Detector Starter Kit

A simple Frequency Division detector for frequencies from 20 kHz to 120 kHz. Simple ON/OFF operation and a robust design makes this ideal for use with small children and large groups where the aim is primarily to hear bats rather than identify them. A recording socket allows calls to be saved using an audio recorder and analysed with BatScan software.

11323-BCT

£91.60







**Duracell Procell Batteries**

Pack of 10 Duracell Procell heavy duty, high capacity alkaline batteries. Particularly suited to professional use in high-drain appliances.

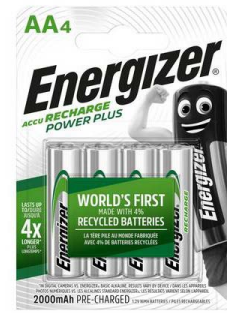
22130206	AAA	£4.39
22130205	AA	£4.21
22130328	C	£4.21
22130380	D	£21.47



**Ansmann Rechargeable Batteries**

High performance batteries for more power. Available in a range of sizes. Pre-charged straight out of the box.

13294	AA 4pack	£22.10
12876-A	D 2pack	£36.30
13293	AA/AAA charger	£43.40



**Energiser AA Rechargeable Batteries**

Pack of 4 Energiser Recharge AA rechargeable batteries, 2000 mAh. Pre-charged straight out of the box; retain 85% of full charge for up to a year. Rechargeable up to 1000 times, with memory-free operation. 1.2 V.

12991	£12.50
-------	--------



**MaHa Battery Charger**

Recharge AA or AAA batteries in one hour and C or D-cell batteries in 1 to 5 hour regardless of the number of batteries. Charging time for a 11,000 mAh D battery is approx. 5 hours. LCD display. Integrated battery conditioner.

12915	£80.30
-------	--------



**Kingston SDHC Memory Cards**

12695-8	8 GB	£6.13
12695	32 GB	£18.40
12695-64	64 GB	£36.80
12695-128	128 GB	£65.44
12695-256	512 GB	£281.00
11317	35 GB Micro	£30.81



**SanDisk SDHC Memory Cards**

SanDisk Extreme SDHC Memory Cards offer read speeds of up to 90 MB/s, twice as fast as ordinary SDHC cards.

11222-64	64 GB	£16.79
11222-128	128 GB	£82.70
11222-256	256 GB	£142.52
11222-512	512 GB	£446.00



**Micro USB Card for Batlogger A/A+**

SanDisk Ultra SDHC UHS-I Memory Cards with adapter. Offer very fast read speeds of up to 80 MB/s . Resistant to water, extreme temperatures, x-rays, and shocks. Compatible with SDHC and SDHC-I devices.

12819	32 GB	£10.36
12819-64	64 GB	£34.30



**Beikell Card Reader**

High-speed SD/Micro SD Card Reader Memory Card Adapter-Supports SD/Micro SD/TF/SDHC/SDXC/MMC-Compatible with Windows,OS.

12728	£7.49
-------	-------





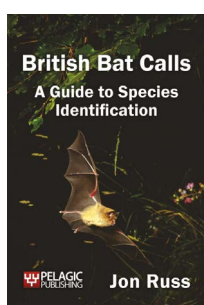
### Kaleidoscope Pro

Wildlife Acoustic's advanced sound analysis package for professional ecologists. An integrated suite of analysis tools quickly converts files, sorts and categorizes bat data by species, compiles your results and exports them in a format that can be loaded into Excel or other applications.

Where GPS information is present, Kaleidoscope can extract this and output the data in .CSV or.KML files. Automated species classification with confidence estimates. Kaleidoscope Pro works with Full Spectrum, Time Expansion or Zero Crossing files and runs on Windows, Linux and Mac operating systems, Analyses large volumes of data very quickly.

Now available as an affordable annual subscription for one user. An online portal ("My Account") makes it easy for large consultancies to administer multiple subscriptions and multiple users.

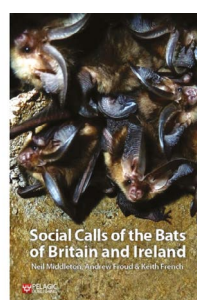
12931	Annual Subscription	£337.00
12932	University Subscription	£249.07



### British Bat Calls

A practical and up-to-date guide to bat echolocation, calls and identification using bat detectors and programs such as BatSound. Clearly and concisely presented by John Russ and contributors.

17012	£35.70
-------	--------



### Social Calls of Bats of Britain and Ireland

This book brings together the current state of knowledge of social calls of bats of Britain and Ireland, with additional examples from elsewhere in Europe. It includes access to a downloadable library of calls to be used in conjunction with the book.

17104	£34.80
-------	--------

### Hiring bat detectors can save you money and simplify your client charging structure!

We have a large fleet of SM2BAT+ units for hire, and smaller numbers of many other models. Our service includes delivery and collection from your address, and all units are fully checked by our in-house engineer before each hire period.

#### What is included?

Our hire units come complete with standard cables, microphones, delivery and collection. Insurance, SD Cards and batteries are NOT included. All units will be fully serviced after each hire period.

Contact [support@wildcare.co.uk](mailto:support@wildcare.co.uk) for more information and pricing structure.



We have a wide range of detectors for hire!

For full terms of hire please visit: [wildcare.co.uk/bat-detector-rental.html](http://wildcare.co.uk/bat-detector-rental.html)

We are proud to be an authorised service and repair centre for Wildlife Acoustics' range of bat recorders and bioacoustics monitoring products.

We can also service or repair **Pettersson**, **Batbox**, **Magenta** and **Anabat** bat detectors, as well as other electronic equipment including Clulite torches, dataloggers, extension cables, trail cameras and sound recorders.

#### What is included with a service?

Servicing is done by our in-house engineers, who perform full diagnostic checks and cleaning of your equipment. Minor repairs and replacements are included within our standard fee, but should additional chargeable items be required we will contact you with a quotation before proceeding. All items except total replacement of the motherboard, daughtercard or microphone element are included within our standard service charge. If your repair requires these additional chargeable replacements we will contact you with a quotation before we proceed with the work.

#### How to book a repair:

1. Check that your item is not still in warranty
2. Find your product from the online product list [www.wildcare.co.uk/rental-and-repair.html](http://www.wildcare.co.uk/rental-and-repair.html)
3. We also offer bulk discounts! Please contact [support@wildcare.co.uk](mailto:support@wildcare.co.uk) for a quotation
4. Checkout and pay. We will then provide you with a reference number and postal instructions
5. Once the service is completed, your product will be returned with a service certificate/engineers report.

For more information on repairs & servicing please visit: [www.wildcare.co.uk/bat-detector-repair.html](http://www.wildcare.co.uk/bat-detector-repair.html) or email: [support@wildcare.co.uk](mailto:support@wildcare.co.uk)

## Roost Visits & Handling



### Telescopic Inspection Mirror

Roost inspection mirror with telescopic shaft and multi-sided swivel head joint. Adjustable length from 250-780 mm. Mirror diameter 55 mm.

18030	£16.28
-------	--------



### Tally Counter

Hand held manual or digital tally counter for bat emergence surveys. 4 digit counts, 0000 to 9999.

12613	Manual	£8.57
12616	Digital	£8.14



### Seascope Endoscope

Robust IP67 waterproof endoscope with a 10 mm shaft making it ideal for the small nooks and crannies used by bats. View still images and videos on the 86 mm LCD display and record onto a micro-sd card. Adjustable LED light, 3.2 x zoom.

18027	£278.00
-------	---------



### Portable Lux Meter

Measure light simply and accurately. Supplied with light sensor connected by a fixed 1.5 m cable. Choice of three range options to allow the best resolution. Rugged and water-resistant body for frequent outdoor use. Powered by a single 9 V battery (included).

19040	£155.00
-------	---------



### Hygro-Thermometer

Ideal pocket-sized pen-shaped hygrometer for measuring the humidity and temperature in a wide range of applications. Displays both humidity and temperature over the range of 20 to 95 % RH and 0 to 49.9 °C.

19018	£19.01
-------	--------

*Do you need some advice?*

Our friendly team are on hand to offer advice  
Monday - Friday 8am-5pm.

Call **01451 833 181** or email  
[sales@wildcare.co.uk](mailto:sales@wildcare.co.uk)



### ThermaData Temperature & Humidity Logger - Internal

Portable humidity and temperature logger with 10 mm LCD display. Measures and records relative humidity (0-100 % RH) and temperature (-20 to 85 °C). Internal sensors.

19301	£98.70
-------	--------



### Temperature & Humidity Logger - USB Cradle

An essential download tool & software package for our range of dataloggers. This data logger cradle or dock is supplied complete with ThermaData logger PC software and a start magnet.

19302	£46.80
-------	--------



### ThermaData Temperature & Humidity Logger - Probe

The HTDF humidity logger is a data logger that measures and records both relative humidity (% RH) and temperature over the range of -20 to 85 °C and 0 to 100% RH.

19306	£125.00
-------	---------





**ThermaData Logger  
MK1 Blind Recording  
Thermometer**

Self-contained temperature data-logger designed to record the temperature of the surrounding environment. The ThermaData® data logge is housed in a water-resistant polythene case and incorporates two LED status indicators.

19317	Thermometer	£30.10
19318	Software & USB	£36.90



**Bat DNA Dropping Sample Collection Kit**

Kit to collect up to 12 samples of bat droppings suitable for subsequent DNA identification to species. Guaranteed to be uncontaminated, using this kit ensures you get the most reliable species identification results from bat dropping DNA analysis. Please note: at present, analysis dates must be arranged separately with the laboratory (kit contains full details), at an additional cost of £ 40 per sample tube.

12562		£26.10
-------	--	--------



**Petzl Swift RL 900 Lumens**

Compact, very powerful and rechargeable headlamp featuring REACTIVE LIGHTING® technology. 900 lumens.

13689		£84.50
-------	--	--------



**Petzl Bindi 200 Lumens**

Ultra-compact rechargeable headlamp designed for everyday athletic activities. 200 lumens.

13692		£43.40
-------	--	--------



**Intensity 280 Head Torch**

CREE XPG3 S2 white LED and 5mm Red LEDs. IPX6 water resistant body with adjustable head strap. Up to 110 hours battery life.

13046		£27.20
-------	--	--------



**Clulite Adjust-A-Beam  
Torch**

A powerful, portable and professional rechargeable torch with adjustable LED beam.

13040		£21.60
-------	--	--------



**LED Lenser Torch P7.2  
Black 4**

Professional quality focusing LED torch. 320 lumens. 4 x AAA batteries included

22130377		£63.00
----------	--	--------



**Lighthouse Headlight Elite  
Focus LED Torch**

3W CREE LED bulb. Extremely bright 140 Lumens. Water resistant aluminium body. Focus flood-spot beam. Wrist strap. 3 x AA batteries included.

22130235		£14.00
----------	--	--------



**Batcone 2 Pro Bat Excluder\***

Robust bat excluder for professional use only. Square entry hole. Built-in semi-flexible flange with mounting holes for easy and fast installation. Can also be used with the flexible vinyl flange, making it effective for virtually any surface application.

10401	£16.17
-------	--------



**Pro-Cone Corner Bat Excluder\***

Robust bat excluder for professional use only. Designed for roost exits in awkward corners. Built-in solid flange with mounting holes for easy and fast installation.

10402	£16.17
-------	--------



**Pro-Cone Square Bat Excluder\***

Robust bat excluder for professional use only. Round entry hole. Built-in solid flange with mounting holes for easy and fast installation. Can also be used with the flexible vinyl or metal flanges, making it effective for virtually any surface application.

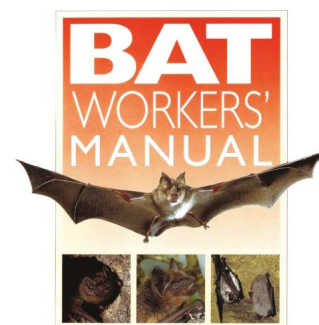
10403	£16.16
-------	--------



**Excluder Flange\***

Flange accessory for bat excluders, available as either metal mesh or clear vinyl.

10405	Mesh	£6.65
10404	Vinyl	£6.65



**Bat Workers Manual**

An essential reference for anyone wishing to obtain a licence to carry out bat work in the UK. This version of The Bat Workers' Manual is a 2012 reprint of the 3rd edition (with no change or updates from the 3rd edition) ISBN: 1861075588 (2004).

17001	£32.60
-------	--------



**Doublet Loupe, 10 x 18 mm**

High quality folding doublet loupe from Opticron. Glass lens with metal frame and chrome plated housing.

13121	£12.03
-------	--------



**Pesola Balance**

The Lightline range of Pesola scales are lightweight with a transparent tube enabling you to view from all angles and with a coloured ring to help visibility.

12700	10 g	£31.70
12702	20 g	£31.70
12704	30 g	£31.70



**Handling Bag**

Made from natural cotton with a drawstring closure, this bag is ideal for holding bats and other small mammals. 25 x 35 cm.

11048	£1.28
-------	-------



### Analogue Calliper

General purpose calliper with a plastic body and metal spine. Metric and imperial graduations. 150 mm (6").

12721

£14.28



### Animal Handling Gloves

Close-fitting gloves with nitrile protected palms for handling bats and other small mammals. Sizes XS (6) to XL (10). Available in sizes XS (6) to XL (10). EN388, 3131. See page 13 for more gloves.

12611-6	6 (XS)	£5.28
12611-7	7 (S)	£5.28
12611-8	8 (M)	£5.28
12611-9	9 (L)	£5.28
12611-10	10 (XL)	£5.28



### Bat Care Box

Bat care box for emergency call-outs. Ideal for larger companies wanting an off-the-shelf solution. Sturdy, lidded cardboard box held closed with a bungee cord. Contains a cotton towel, water container, two sizes of polythene bag, and handling gloves in Small, Medium or Large.

11215-S	S	£13.69
11215-M	M	£13.69
11215-L	L	£13.69



## Do you need some advice?

Our friendly team are on hand to offer advice Monday - Friday 8am-5pm.

Call **01451 833 181** or email [sales@wildcare.co.uk](mailto:sales@wildcare.co.uk)



## Bat Boxes - Wooden

We stock a full range of bat boxes in a variety of materials. You'll find a bat nesting box for every situation including building integrated, hibernation boxes, maternity boxes & tree boxes. It is advised to install them over 3 metres high if possible so that there is a clear flight path and some direct sunlight throughout the day.

Within this collection, we provide a variety of manufacturers which include: Schwegler, Vivara Pro, Habibat, Ibstock, The Nestbox Company, Wildlife World and Wildcare (yes that's us too).



### Chavenage Cavity Bat Box

Ideal for any garden, woodland or house wall site, this single chamber cavity bat box is made from untreated durable FSC timber which provides longevity and excellent insulation. 43 x 18 x 16.4 cm.

10556

£18.79



### Double Chamber Hardwood Box

A traditional small hardwood bat box with two internal chambers to provide more roosting space inside the box. The hardwood construction ensures longevity, insulation and protection from

10613

£18.13



### Improved Crevice Bat Box, Triple

With 50 % more internal space than the Double version, this box has three of the crevices so loved by pipistrelles. An internal ceramic heat sink and black wood stain keep the box warm and thermally stable. 33 x 16 x 13 cm.

10562

£32.10



### Improved Cavity Bat Box

Designed for cavity roosting bats including brown long-eared bats and Myotis species. Black external surfaces increase heat absorption, and internal ceramic heat sinks retain and stabilise box temperature. 38 x 24 x 15 cm.

10559

£30.60



### Improved Crevice Bat Box, Double

This plywood box has two crevices. An internal ceramic heat sink and black wood stain keep it warm and thermally stable, and the overhanging roof protects against the rain. 33 x 16 x 10 cm.

10560

£27.60



### Chambord Bat Box

A traditional style bat box with one chamber and grooved ladder for access. Made from exterior grade plywood. Entrance at the base. Painted black for warmth.

11244

£27.20



### Causa Maternity Bat Box

A large plywood bat box with four chambers to encourage breeding. Painted black for warmth. 51 x 78 x 16.5 cm.

11260

£90.00

*Do you need some advice?*

Our friendly team are on hand to offer advice Monday - Friday 8am-5pm.

Call **01451 833 181** or email [sales@wildcare.co.uk](mailto:sales@wildcare.co.uk)



### Eco Kent Bat Box

A new eco design, based on the popular and proven Kent bat box design. Its weatherproof, protective outer shell is made from recycled plastic and is designed to last at least 20 years. The wooden interior is made from FSC Certified spruce. Fixing 3 concealed keyhole fixings at top of box. Ideal for crevice dwelling bats such as common and soprano pipistrelles.

10691	£36.80
-------	--------



### Kent Bat Box

Two enclosed crevices and a third where the box abutts the wall provide a range of microclimates that the bats can move between. Made from 22 mm untreated timber with fixing holes on the side batons. 18.5 x 14.5 x 37.5 cm.

10656	£16.97
-------	--------



### Vincent Pro Bat Box

This large box is highly effective for barbastelle, Leisler's, common pipistrelle, soprano pipistrelle, brown long-eared, Natterer's and whiskered bats. Three vertical chambers with varying size options accomodate different species and temperature zones. Made from durable FSC timber and a recycled black plastic

10651	£61.40
-------	--------



### Timber Nursery Box

This large plywood box has three internal panels to provide a variety of crevices and areas for the differing requirements of young bats. This bat box is manufactured from 18 mm plywood, with green felt on the roof for longevity. 106 x 53 x 63 cm.

10699	£213.00
-------	---------



### Maternity Bat Box

Ceramic heat sinks and black colouration help this box warm up quickly and maintain stable internal temperatures. The 1.7 cm entrance slot deters birds. Three internal crevices. Pole-mounted version

10558	£80.60
-------	--------



### Large Colony Bat Box

Ceramic heat sinks and black colouration help this box warm up quickly and maintain stable internal temperatures. The 17 mm entrance slot deters birds. Three internal crevices. Pole-mounted version available - please ask for details. 78 x 35 x 14 cm.

10569	£125.00
-------	---------



### Heated Bat Boxes

These electrically heated bat boxes were developed to mitigate for the loss of maternity roosts of pipistrelle species, and come in two sizes, the smaller Maternity Box and the larger Colony Box. Each box has three crevices for the bats to roost within, plus ceramic heat sinks and black external colouration, to help it warm up quickly and maintain a stable temperature. 1.7cm entrance slot is ideal for bats but deters birds.

An internal waterproof heater is thermostatically controlled and set by the user, and consumes very little power. Easy to install and operate, it simply plugs into a conventional socket with no wiring required. Made in the UK, and safe for bats and humans.

Maternity Box: 49 x 26 x 13 cm. Colony Box: 78 x 35 x 14 cm.

10561	Maternity	£336.00
10568	Colony	£538.00





### Segovia Built-in Bat Box

Designed to be built into a wall with the entrance face at the front, remaining exposed and visible. The boxes have removable sides so that an extension box (product 11298) can be placed next to this box, to create a larger roosting space.

11345	£36.00
-------	--------



### Schwegler Bat Tubes

Designed to be built into an external wall and rendered over, these crevice bat boxes are available in two versions. The 1FR is for installing singly, while the 2FR has interconnecting holes and can be installed to create much larger spaces. 47.5 x 20 x 12 cm.

10184	1FR	£101.60
10608	2FR	£97.50



### Bat Block

The Bat Block is designed to create roosting space for bats within the framework of new builds, or to be retrofitted within existing properties. Features an internal FSC certified wooden panel, a small entrance space to deter larger birds and predators. Standard UK block size. 21.5 x 44 x 16 cm.

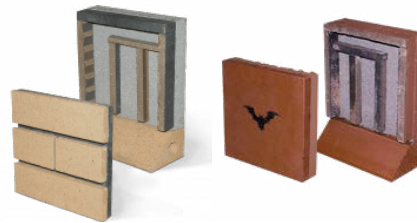
10372	£74.80
-------	--------



### Integrated Eco Bat Box

Constructed from 100% recycled plastic with a wooden internal roost chamber. Available as a crevice box with two 2.2 cm wide internal crevices, or as a cavity box with a 6 cm space. 44 x 21.5 x 11 cm.

10554	Crevice	£58.60
10557	Cavity	£58.60



### Ibstock Bat Box B & C

Several roosting chambers provide zones of different temperatures within the box. The bats are contained within the box itself and the entrance at the bottom allows droppings to fall out. Red/ Buff in colouration: match your design. Available in 215 or 290mm.

10661	C 215 x 215 - Buff	£165.61
10662	C 215 x 290 - Buff	£165.61
10648-RED	B 215 x 215 - Red	£134.05
10745	B 215 x 290 - Red	£134.05
10648	B 215 x 215 - Buff	£134.05
10649	B 215 x 290 - Buff	£134.05



### Soffit Bat Box

The soffit bat box utilises the wasted space above the soffit on a standard roost structure. The entrance is formed by cutting away a 20 mm slot in the back of the soffit board against the external wall, and a specially designed plate is then screwed through into the bat box to secure it.

10626	£42.70
-------	--------



### Habitat 001 Built-in Bat Box

A large, concrete box providing a single chambered internal roost space. The Habitat 001 can be seamlessly intergrated into the fabric of a building and is suitable for most common species. 44 x 21.5 x 10.2cm.

10188	Plain	£152.00
10359-B	Blue	£152.00
10359-R	Red	£152.00
10350	Bespoke	£156.00



### Habitat 2S Built-in Bat Box

The Habitat 2S is a smaller version of the Habitat 001, and can be supplied with an open or closed top (for stacking). 22.5 x 21.5 x 10.2 cm.

10363	POA
-------	-----



### Habitat 3S Built-in Bat Box

The Habitat 3S is a smaller version of the Habitat 001, and can be supplied with an open or closed top (for stacking). 30 x 21.5 x 10.2 cm.

10364	£100.20
-------	---------





### Habibat 003 Built-in Bat Box

Based on the Habibat 001, the Habibat 003 Bat Box features a stretcher bond facing which ensures a discreet and seamless finish. 44 x 21.5 x 10.2 cm plus facing bricks.

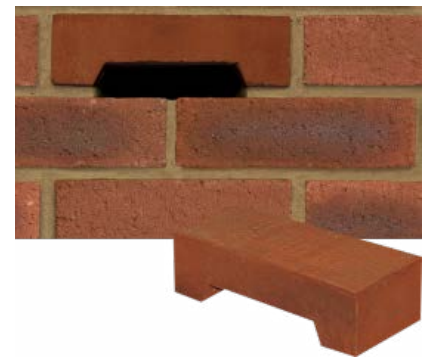
10187	£173.00
-------	---------



### Schwegler 2FE Wall-Mounted Bat Shelter

Designed to be fixed to an exterior wall to provide a summer hideaway for bats, or installed in damp cellars, bunkers, bridges or caves protected from ice and frost for winter hibernation. 30 x 25 x 5 cm.

10623	£47.50
-------	--------



### Ibstock Bat Access Brick

A standard sized red brick that allows bats free access into a suitable space within a building. In stock in Ibstock A0610A (cheddar red), but available in other colours – please ask for details. 21.5 x 6.5 cm.

10601	£14.23
-------	--------

### Bat Access Tile

A modified roof tile that allows bats to access a roof void or underneath roof felt. Made from a vacuum-moulded plastic cowl embedded into a tile of your choice. 41.8 x 37.5 x 8 cm.

10191-C	Clay	£164.30
10191-S	Slate	£92.28
10191-L	Lead	£96.02



### Schwegler 1FE Bat Access Panel

A maintenance free access panel for installation on or in external walls. Supplied either with an open back to allow bats access further into the building or with a back panel (available separately) as a stand-alone roost unit. 30 x 25 x 5 cm.

10611	1FE	£61.10
10615	Back Panel	£38.20



### Build-In Woodstone Bat Access

Made from a mix of concrete and wood fibres, this bat access panel has been specifically designed to be built into a wall, creating a small entrance for bats. 22 x 50 x 16 cm.

10682	£16.97
-------	--------



### Truss Bat Box

This is a very specialist softwood bat box that mimics the crevices found in expanded mortise joints in old roof trusses. 12 x 32 x 45 cm.

10616	£54.00
-------	--------

## Bat Boxes - Built-in



### Schwegler 1FF Bat Box

A popular, large, general-purpose crevice box suitable as a roost or nursery. A roughened wooden panel provides a warmer alternative space to the cooler woodcrete. The entire front of the box can be swung open for inspection. 43 x 27 x 14 cm.

10606	£83.10
-------	--------



### Schwegler 2F Universal Bat Box

An excellent general-purpose bat box, suitable for summer use by a wide variety of species. The textured, spherical roof provides hanging opportunities and the removable front panel allows the box to be cleaned in winter. 33 x 16 x 16 cm.

10604	£36.01
-------	--------



### Schwegler 2FN Bat Box

A general purpose cavity bat box for in or around woodlands. It has two entrances in the base, one at the bottom of the front panel and one at the rear of the base, against the tree. 36 x 16 x 16 cm.

10605	£48.90
-------	--------



### Chillon Bat Box

An attractive woodstone bat box suitable for small colonies of building-dwelling bats such as common and soprano pipistrelles. Grooves on the landing plate and inside. 29 x 44 x 9 cm.

11245	£32.20
-------	--------



### Harlech Bat Box

Made from woodstone, this bat box offers excellent insulation and minimum condensation for roosting bats. Suitable for wall mounting. 19 x 24 x 18.

11266	£20.80
-------	--------



### Large Multi-Chamber Bat Box

Made from woodstone, this bat box offers excellent insulation and minimum condensation for roosting bats. Available as a small cavity bat box or larger crevice box.

10681	£50.90
-------	--------



### Schwegler 1FQ Summer Bat Roost

Designed to fit on an external wall, this woodcrete box is equally attractive to bats as a roost or a nursery. A special porous coating helps maintain inside temperatures, and it has internal angled ledges to offer different micro-climates.

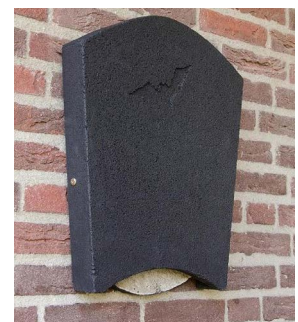
10607	£126.00
-------	---------



### Eco Cavity / Crevice Bat Box

These bat boxes contain an outer shell constructed from recycled plastic made from bale wrap as well as the internal roost chamber being constructed from FSC Certified oriented strand board (OSB).

10566	Crevice	£32.10
10567	Cavity	£32.10



### Beaumaris Bat Box

Suitable for crevice roosting bats, these woodstone boxes have a rough interior and good thermal insulation. Small: 6.5 x 28 x 40 cm; Large: 6.5 x 38 x 50 cm.

11280	Small	£31.40
11281	Large	£42.40





### Miramare Colony Box

A large colony bat box with three grooved wooden panels inside, making four internal compartments. Painted black and made from insulating woodstone for a warm roosting area. Bracket mounted with additional holes for a rope or wire. 85 x 25 x 25 cm.

11268	£101.80
-------	---------



### Double Chamber Rocket Bat Box

Provides a large roosting area with two chambers for a variety of micro-climates. Plywood construction finished in black water-based masonry paint. Mounting pole not included. 80 x 27.5 cm (box).

10361	£419.00
-------	---------



### Schwegler 1FW Maternity Bat Box

Developed specifically as a maternity roost for smaller bats such as pipistrelles, Daubenton's and long-eared bats. A high domed roof provides hanging space, and two crevices are created by grooved internal wooden boards.

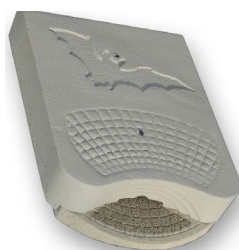
10622	£69.90
-------	--------



### Schwegler 1WI Winter Bat Roost

Designed for the safe hibernation of bats in winter as well as for summer roosting. The combination of several effective insulating materials in a layer structure ensures the box maintains temperature with sufficient air-convection and permeability. 5.45 x 34.5 x 9.5 cm.

10629	£123.00
-------	---------



### Schwegler 1WQ Summer & Winter Bat Roost

A sophisticated box for the safe hibernation of bats in winter as well as for roosting and as a nursery during summer. The tried and tested double wall system has excellent insulating properties, protecting bats in cold winters and preventing overheating. 58 x 38 x 12 cm.

10619	£188.14
-------	---------



### Schwegler 1FW Hibernation Bat Box

One of the biggest bat boxes available, designed for large colonies to hibernate in. This box has very effective insulation material between the outer and inner walls, which also reduces the amount of condensation inside. 50 cm high x 38 cm diameter.

10610	£278.00
-------	---------



### Schwegler 1FS Cavity Colony Bat Box

Provides plenty of space for large maternity colonies of species such as noctule and Daubenton's bats. Large cavity space, with three corrugated boards to provide additional crevice areas and a special insulated clinging panel on the roof. 44 cm high x 28 cm

10609	£112.37
-------	---------



### Timber Hibernation Box

A small timber box with 50 mm thick timber walls creating a small but secure hibernation chamber for bats. This is suitable for fixing in buildings or on trees and is manufactured from FSC certified, untreated softwood. 35 x 15.5 x 15 cm.

10630	£43.90
-------	--------



### Schwegler 1FFH Bat Box

The universal Schwegler 1FFH Bat Box is a good option for providing a suitable Summer roost site from early summer to late Autumn.

10624	£149.00
-------	---------

**Wildcare is the UK and Europe's foremost equipment supplier for professional ecologists and environmental managers. We have been serving the ecology industry for over 15 years, working with clients from many different sectors.**

We understand that our clients are usually working to tight deadlines, at sites that might be in a construction zone one day and a remote mountain the next. Our next day UK delivery service ensures your equipment turns up on time and in full, no matter where you are.

We also understand the changing seasonal and legislative demands placed on ecologists, and keep up-to-date with the latest industry standards so that you can be sure to get the right equipment. We keep large stocks of products such as Newt bottles, Badger bait, Dormouse boxes, Bat and Bird boxes, and Bat detectors.

Our friendly staff are here to help over the phone or via email, from 7.30am to 5pm Monday to Friday. We have years of experience and are always very happy to advise you on the best equipment to use for your particular project.

**Your trusted partner for:**

